



- Kufa Double Line
- Garage Double Line
- Single Line
- Service Line

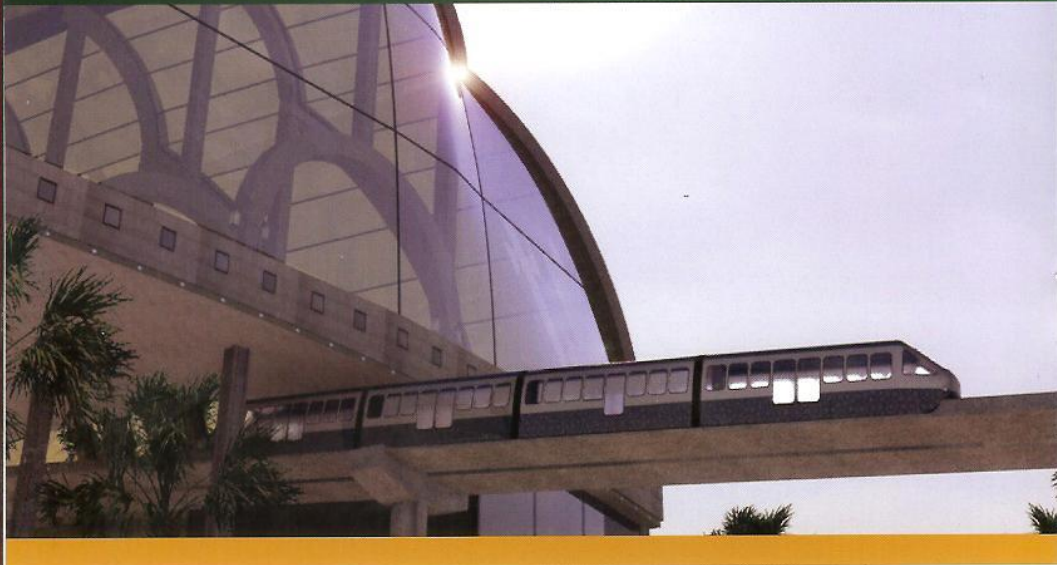




## VISION

Every year millions of pilgrims descend on the holy city of Najaf as part of a religious rebirth that commemorates the martyrdom of Imam Ali and Imam Husayn. While on this journey the pilgrims also offer prayers at the Great Mosque of Kufa and Sahla Mosque, which are some of the earliest mosques of Islam. Many of these pilgrims arrive by various buses which drop them at a northern and southern garage a few kilometers from these mosques. Due to the sheer mass of people, this mode of transportation becomes highly inefficient causing tension and delays, which as a result, hinders the religious experience.

To address this transportation issue, it is our vision to construct a world class, cost effective monorail system. This system will effortlessly transport locals and pilgrims to the Holy Mosques of Najaf and Kufa and surrounding areas. Through this vision the faithful will no longer suffer because we will put the shovel to the ground and ease their path to God.





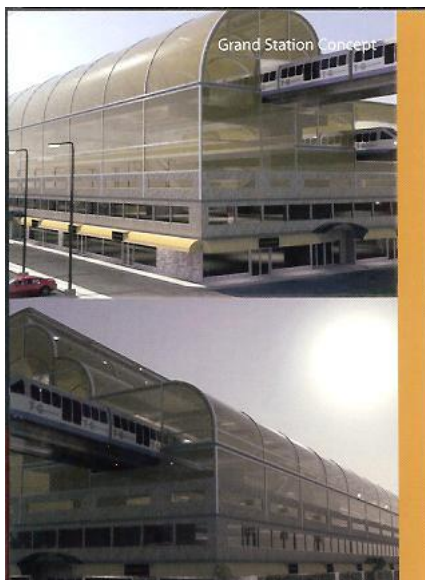
This project will be carried out in two phases:

#### PHASE-I

- Transport pilgrims from two bus garages to the Kufa Line
- From the Kufa Line, transport pilgrims between the three holy mosques

#### PHASE-II

- Extend the monorail system to the International Airport
- Extend the monorail system to other parts of Najaf



## LOGISTICS

The plan currently includes two lines: the Garage Line and the Kufa Line that will intersect at a grand monorail station.

- **Garage Line:** The Garage Line will have 5 stops and will provide seamless transfer of passengers to the Kufa Line at the grand station.
- **Kufa Line:** The Kufa Line will begin at the west end of the Imam Ali Mosque circling around through the south side of the old city of Najaf. It will then proceed northeast to the Mosque at Kufa. From there, the line extends to Sahla Mosque where it will loop around and head southwest to reconnect with the mainline just north of the University in Najaf.

## OVERALL BENEFITS

The benefits of constructing and operating this intra city monorail transportation system includes:

- Minimal real estate will be used as the guideways and stations will be elevated along the median of major streets
- The creation of 1,500 direct jobs from the construction of the system with an economic impact of 4,500 additional jobs
- The creation of over 800 permanent jobs with an economic impact of 4,000 additional jobs by the operation of the monorail system
- Direct tax benefit to the Governorate of Najaf in excess of US\$500 million over 20 years
- Additional revenue in excess of US\$120 million is also expected over 20 years

# Monorail System for Najaf-Kufa, Iraq

